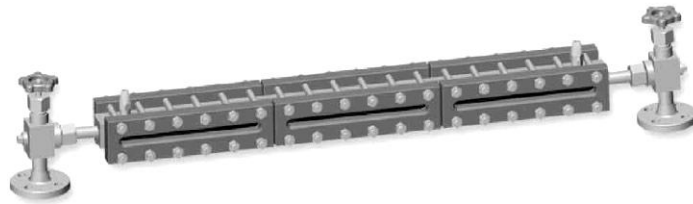


## ULB-S Double Color Glass Plate Level Gauge

**Summary** ULB-S double color glass plate level gauge applies double color under light going through different mediums, it produce different reflection and refraction. Via using color filter, the light in different mediums presents a certain color. Through the glass plate, when there is liquid inside, the color is green (or natural color), while there is gas, the color is red. So, the gauge has two colors exhibition and the interface of the liquid and gas is very clear.



### Main technical parameter

Range (the distance between the flanges' center L): 500mm, 800mm, 1100mm, 1400mm, 1700mm or on request;

Visual range:  $H=L-260$ ;

Nominal pressure:  $\leq 4.0\text{MPa}$ ;

Operating temperature:  $-20^{\circ}\text{C} \sim +250^{\circ}\text{C}$ ;

Needle valve automatically close pressure:  $\geq 0.3\text{MPa}$ ;

Wetted material: 20, 304, 316 or on request;

Non- wetted material: carbon steel;

Heating steam jacket joints: R3/8 (male thread) or on request;

Heating steam pressure:  $\leq 1.0\text{MPa}$ ;

Flange: HG/T20592-2009, HG/T20615-2009 or on request;

### Model selection table

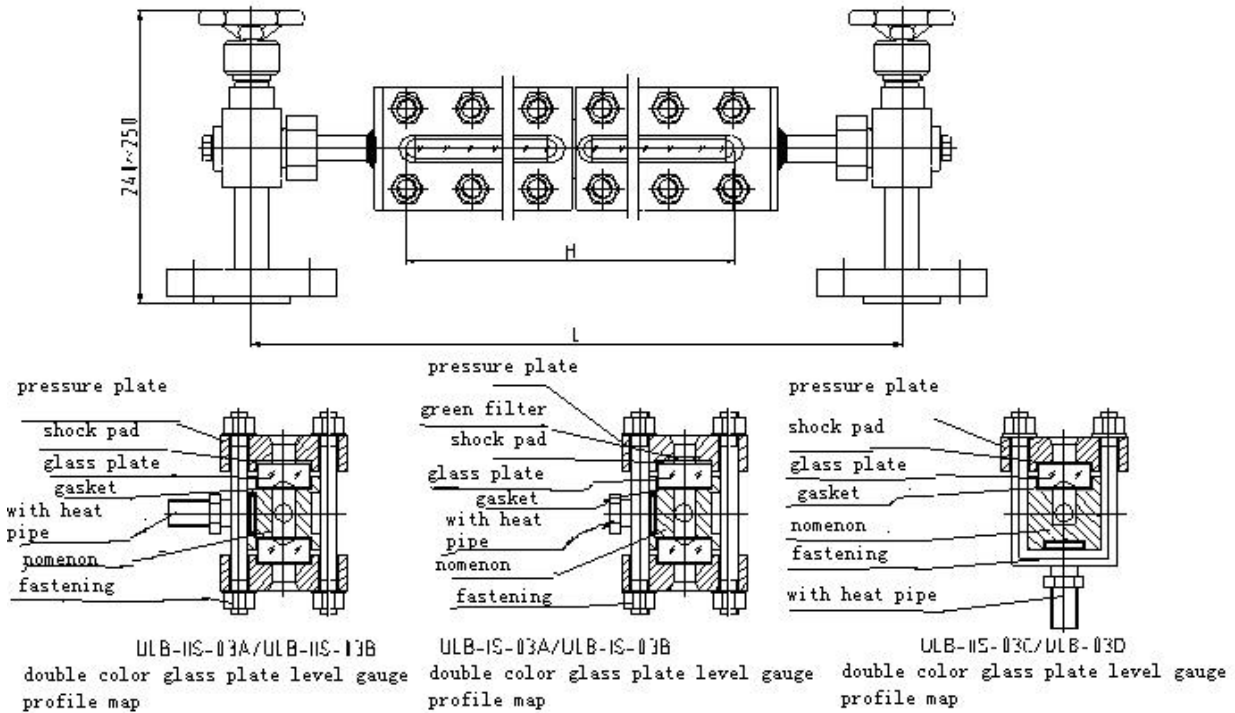
Model	Name	Application	Color display
ULB- I S-03A	Double color transparent glass plate level gauge	For colorless transparent liquid, light better place	Green liquid and red gas
ULB- II S-03A		For color liquid, light better place	The natural color liquid and red gas
ULB- I S-03B	Double color transparent glass plate level gauge with heating	For colorless transparent, sticky and easily frozen medium	Green liquid and red gas
ULB- II S-03B		For color , sticky and easily frozen medium	The natural color liquid and red gas
ULB- II S-03C	Double color reflection glass plate level Gauge	For color liquid, light better place	The natural color liquid and red gas
ULB- II S-03D	Double color reflection glass plate level gauge with heating	For color , sticky and easily frozen medium	The natural color liquid and red gas

Note: If level gauge with scale plate, please write R at the end of model. For example: ULB- I S-03AR.

# ULB-S Double Color Glass Plate Liquid Level Gauge

## Outline and installation dimensions

### Structure and size



## Order requirements

- ◆ Model and specification
- ◆ Distance between flanges' center
- ◆ Medium
- ◆ Operating pressure
- ◆ Operating temperature
- ◆ Flange standard
- ◆ Wetted material
- ◆ Other requirements